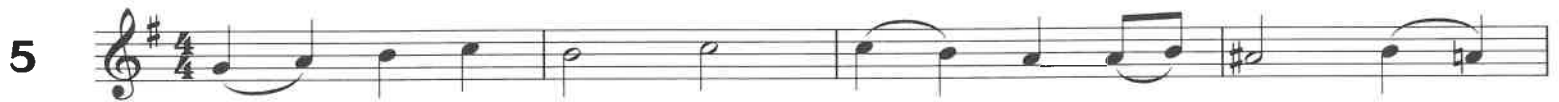


30 ORIGINAL CHORALES AND WARM-UPS

E♭ Horn 1

Philip Sparke



E♭ Horn 1

6

Musical score for E♭ Horn 1, measure 6. It consists of three staves of music in G major (one sharp) and 3/4 time. The first staff begins with a treble clef, a key signature of one sharp (F#), and a 3/4 time signature. The music features a series of eighth and quarter notes with various phrasings and slurs.

7

Musical score for E♭ Horn 1, measure 7. It consists of three staves of music in G major (one sharp) and 4/4 time. The first staff begins with a treble clef, a key signature of one sharp (F#), and a 4/4 time signature. The music features a series of eighth and quarter notes with various phrasings and slurs.

8

Musical score for E♭ Horn 1, measure 8. It consists of three staves of music in G major (one sharp) and 3/4 time. The first staff begins with a treble clef, a key signature of one sharp (F#), and a 3/4 time signature. The music features a series of eighth and quarter notes with various phrasings and slurs.

E♭ Horn 1

9  Musical notation for measure 9, first staff. Treble clef, 4/4 time signature. The staff contains a half note G4, followed by a quarter note A4, a quarter note B4, a quarter note C5, a quarter note B4, a quarter note A4, a quarter note G4, a quarter note F4, a quarter note E4, and a quarter note D4.


 Musical notation for measure 9, second staff. Treble clef, 4/4 time signature. The staff contains a half note G4, followed by a quarter note A4, a quarter note B4, a quarter note C5, a quarter note B4, a quarter note A4, a quarter note G4, a quarter note F4, a quarter note E4, and a quarter note D4.

10  Musical notation for measure 10, first staff. Treble clef, 4/4 time signature, key signature of one sharp (F#). The staff contains a half note G4, followed by a quarter note A4, a quarter note B4, a quarter note C5, a quarter note B4, a quarter note A4, a quarter note G4, a quarter note F4, a quarter note E4, and a quarter note D4.

 Musical notation for measure 10, second staff. Treble clef, 4/4 time signature, key signature of one sharp (F#). The staff contains a half note G4, followed by a quarter note A4, a quarter note B4, a quarter note C5, a quarter note B4, a quarter note A4, a quarter note G4, a quarter note F4, a quarter note E4, and a quarter note D4.

11  Musical notation for measure 11, first staff. Treble clef, 4/4 time signature, key signature of one sharp (F#). The staff contains a half note G4, followed by a quarter note A4, a quarter note B4, a quarter note C5, a quarter note B4, a quarter note A4, a quarter note G4, a quarter note F4, a quarter note E4, and a quarter note D4.

 Musical notation for measure 11, second staff. Treble clef, 4/4 time signature, key signature of one sharp (F#). The staff contains a half note G4, followed by a quarter note A4, a quarter note B4, a quarter note C5, a quarter note B4, a quarter note A4, a quarter note G4, a quarter note F4, a quarter note E4, and a quarter note D4. Musical notation for measure 11, third staff. Treble clef, 4/4 time signature, key signature of one sharp (F#). The staff contains a half note G4, followed by a quarter note A4, a quarter note B4, a quarter note C5, a quarter note B4, a quarter note A4, a quarter note G4, a quarter note F4, a quarter note E4, and a quarter note D4.

12  Musical notation for measure 12, first staff. Treble clef, 3/4 time signature, key signature of two flats (B♭). The staff contains a half note G4, followed by a quarter note A4, a quarter note B4, a quarter note C5, a quarter note B4, a quarter note A4, a quarter note G4, a quarter note F4, a quarter note E4, and a quarter note D4.

 Musical notation for measure 12, second staff. Treble clef, 3/4 time signature, key signature of two flats (B♭). The staff contains a half note G4, followed by a quarter note A4, a quarter note B4, a quarter note C5, a quarter note B4, a quarter note A4, a quarter note G4, a quarter note F4, a quarter note E4, and a quarter note D4. Musical notation for measure 12, third staff. Treble clef, 3/4 time signature, key signature of two flats (B♭). The staff contains a half note G4, followed by a quarter note A4, a quarter note B4, a quarter note C5, a quarter note B4, a quarter note A4, a quarter note G4, a quarter note F4, a quarter note E4, and a quarter note D4.

E♭ Horn 1

13

14

15

16

E♭ Horn 1

24 



25 



26 



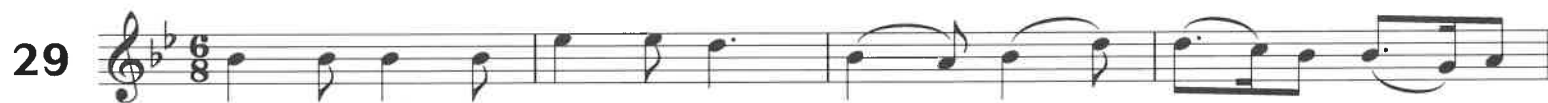
E♭ Horn 1

27 



28 



29 



30 

